



# LEE

---

40.90 M (134') | BAGLIETTO | 2023



# MASTERPIECE OF NAVAL ENGINEERING

---

LEE is an exquisite new yacht launched by the renowned Italian shipyard Baglietto in La Spezia and the fourth unit in its popular 40-metre DOM 133 series. As one of Baglietto's most successful series, LEE is a masterpiece of naval engineering and design that will redefine your yachting experience. With a length of 40.90 meters and a sleek profile, LEE embodies elegance and power, offering the ultimate comfort for your charter adventure. Its shallow draught of 2.10 meters (7 feet) allows easy navigation in shallow waters, ensuring a comfortable long-range cruising experience. Whether exploring secluded coves or cruising the open sea, LEE provides an unparalleled charter experience.



















 BAGLIETTO



00000



BAGUETTE

# WELCOME ON BOARD

---

Designed by Stefano Vafiadis, the exterior of this yacht is truly remarkable. One of its standout features is the aft deck pool with a split-level design, creating a comfortable social area at the stern. The pool comes with a movable floor system that can close completely, maximizing the use of the aft deck when the pool is not in use. Crowning the yacht is a sundeck with a convertible sliding perforated sunroof, providing a perfect blend of shade and sun. Additionally, guests can enjoy a spacious sunbathing area on the bow, making this yacht an ideal choice for those looking to relax and soak up the sun.



MAIN DECK AFT



MAIN DECK AFT



MAIN DECK AFT



MAIN DECK AFT



UPPER DECK AFT





UPPER DECK AFT



UPPER DECK AFT



UPPER DECK AL-FRESCO DINING AREA



UPPER DECK AL-FRESCO DINING AREA



FORWARD LOUNGE AREA



SUNDECK



SUNDECK



SUNDECK





SUNDECK



SUN DECK - JACUZZI POOL



SUN DECK - JACUZZI POOL

# INTERIORS

---

LEE embodies the 'home on the water' ethos, offering an exceptional charter experience with high-volume interiors designed by Tehila Bracha Magyar Shelef. This yacht provides rare living spaces for its size, seamlessly blending indoor and outdoor areas reminiscent of the entire DOM line. The relaxing color tones and soft, gentle furniture shapes, inspired by tropical beach pebbles, create an informal and familiar ambiance. This is particularly evident in the spacious main deck salon, featuring fully openable floor-to-ceiling windows and sliding doors that enhance the connection to the cockpit. This innovative design breaks down boundaries between exterior and interior, and with flush sills, it creates a seamless flow between deck levels, offering charter guests a unique and harmonious experience.



MAIN SALON



MAIN SALON



DINING AREA

The upper deck volunteers a sky lounge which has one key difference when compared to past DOM 133 models; the windows have been lowered and a large bar unit has been installed on the side, which also serves the outdoor dining area.



SKY LOUNGE



SKY LOUNGE





SKY LOUNGE

# ACCOMMODATION

---

Forward is the master suite, featuring a foldable balcony that extends the cabin area by an additional two meters. This is perfect for enjoying breakfast with a view. With the touch of a button, the windows fold down, teak decking slides out from under the floor, and railings rise automatically, creating a seamless outdoor space.

You'll find four more well-appointed cabins on the lower deck, including three VIP cabins and one twin with additional pullman bed. Each cabin offers exceptional comfort and style, ensuring a lavish stay for all guests.



MASTER CABIN



MASTER CABIN



MASTER CABIN





MASTER CABIN



MASTER CABIN BATHROOM



MASTER DECK LOBBY





GUEST CABIN



GUEST CABIN



GUEST CABIN & GUEST BATHROOM





UPPER DECK WHEELHOUSE



MAIN DECK GALLEY



LOWER DECK CREW MESS

# LIFESTYLE

---

LEE offers an extensive selection of water toys, ensuring endless fun and adventure for its guests. The impressive collection includes a high-speed jet ski, sleek e-foils for an exhilarating ride above the water, and versatile sea bob and iAqua for exploring beneath the surface. Paddle boards are available for a more relaxed experience on the water, and the fleet is rounded out by the RIB tender, Pirelli 4M, which provides both convenience and excitement.





LOWER DECK ENGINE ROOM





AFT GARAGE

# SPECIFICATION

---

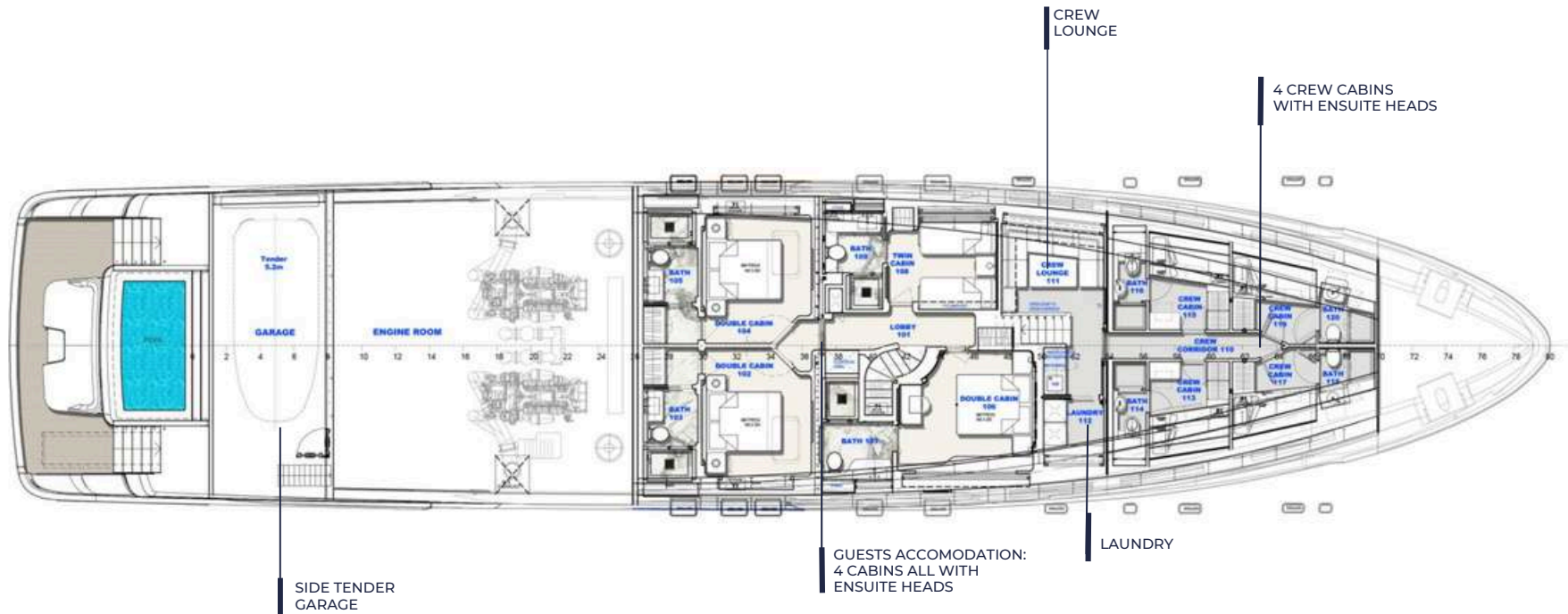
CATEGORY:	MOTOR YACHT
LOA:	40.90M / 134"
BEAM:	8.70M / 29"
DRAFT:	2.20M / 7"
BUILDER:	BAGLIETTO
BUILD YEAR:	2023
EXTERIOR DESIGN:	STEFANO INGLESE VAFIADIS
INTERIOR DESIGN:	TEHILA BRACHA MAGYAR SHELEF
NAVAL ARCHITECT:	BAGLIETTO
HULL MATERIAL:	ALUMINIUM
SUPERSTRUCTURE MATERIAL:	ALUMINIUM
NUMBER OF DECKS:	3
GRT:	411
<hr/>	
GUESTS SLEEPING:	11
NUMBER OF CABINS:	5
CABINS CONFIGURATION:	1 MASTER, 3 VIP, 1 TWIN (WITH PULLMAN)
TOTAL CREW:	9
<hr/>	
ENGINES:	2 X CAT C32 -1,193 kW (1,600 HP) AT 2,300 RPM
FUEL CAPACITY:	40,000 L
WATER CAPACITY:	10,000 L
CRUISING SPEED:	15 KNOTS
MAXIMUM SPEED:	17 KNOTS
CRUISING RANGE:	3,500 AT 10 KNOTS
STABILISERS CMC SUPER ACTIVE:	UNDERWAY AND AT-ANCHOR



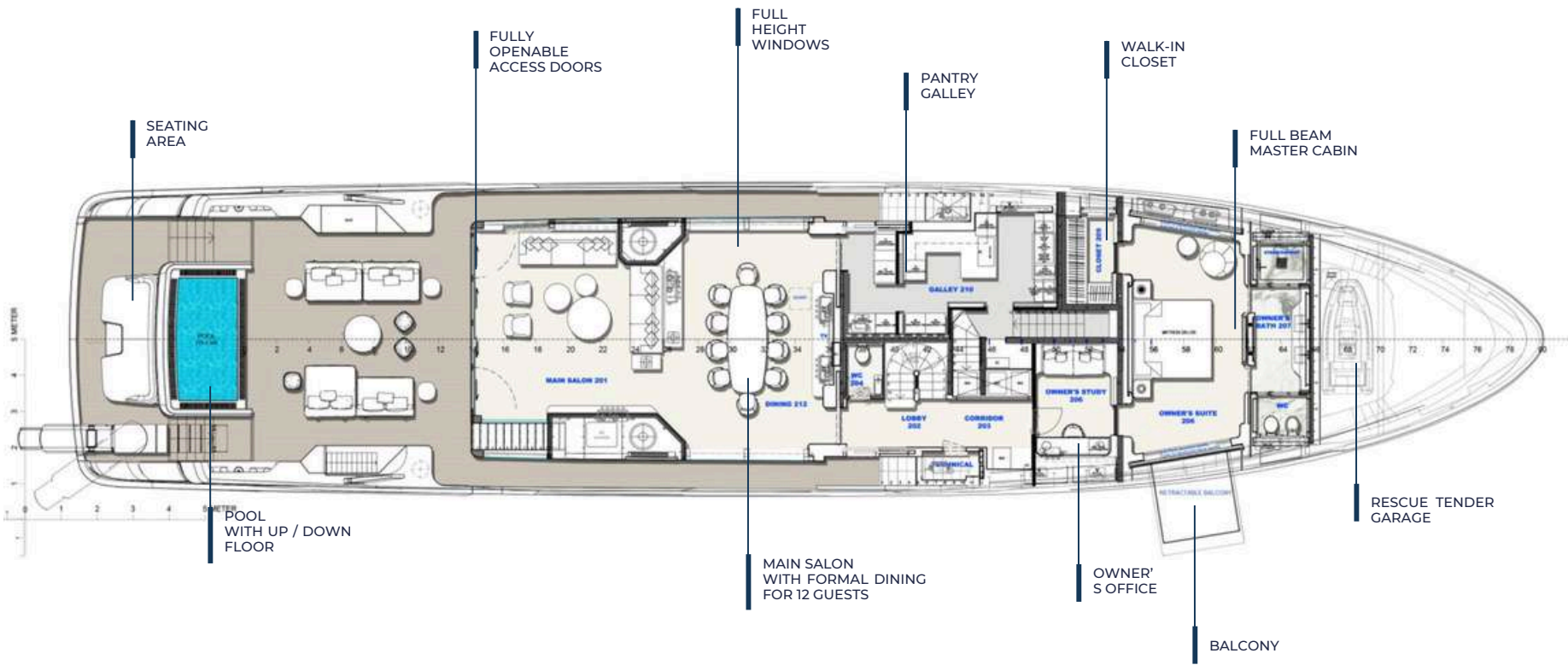
# FEATURED HIGHLIGHTS

---

- A BRAND NEW YACHT LAUNCHED BY BAGLIETTO AS A PART OF DOM 133 SERIES - ONE OF THE SHIPYARD'S MOST SUCCESSFUL SERIES TO DATE
- COMFORTABLE LONG-RANGE CRUISING AND A SHALLOW DRAUGHT FOR AN EASY NAVIGATION IN SHALLOW WATERS
- EQUIPPED WITH THE LATEST ADVANCED TECHNOLOGY TO MINIMISE THE ECOLOGICAL FOOTPRINT
- AFT DECK POOL, WITH A SPLIT-LEVEL DESIGN THAT CREATES A COMFORTABLE SOCIAL AREA AT THE STERN OF THE BOAT
- OTHER ALFRESCO AREAS INCLUDE A LARGE SUNBATHING AREA ON THE BOW AND SUNDECK WITH A "CONVERTIBLE" SLIDING PERFORATED SUNROOF
- HIGH-VOLUME INTERIORS OFFER RARE LIVING SPACES FOR A YACHT OF ITS SIZE AND CREATE A RELAXED AMBIENCE
- SPACIOUS MAIN DECK SALON, EQUIPPED WITH FULLY OPENABLE FLOOR-TO-CEILING WINDOWS AND SLIDING DOORS
- OWNER'S CABIN FEATURES A FOLDABLE BALCONY THAT IS CAPABLE OF EXTENDING THE CABIN AREA BY AN ADDITIONAL TWO METRES
- 4 WELL-APPOINTED CABINS ON THE LOWER DECK, INCLUDING 3 VIP CABINS AND 1 TWIN WITH A PULLMAN BED
- LARGE ARRAY OF WATER TOYS INCLUDING A JET SKI, E-FOILS, A SEA BOB, A IAQUA, PADDLE BOARDS, A RIB TENDER - PIRELLI 4M

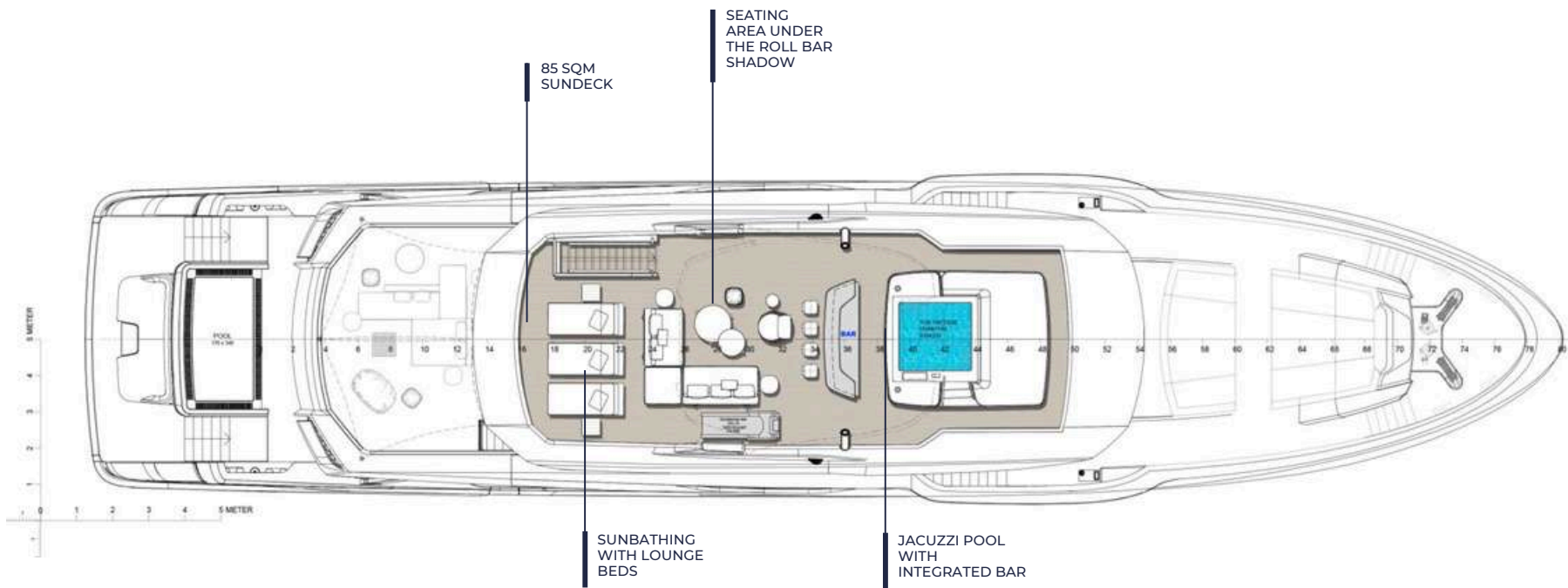


GENERAL ARRANGEMENT - LOWER DECK



GENERAL ARRANGEMENT - MAIN DECK





GENERAL ARRANGEMENT - SUNDECK





