

TRIUMPH

65.40M (214'7") | BENETTI | 2021



WINNER OF THE **NEPTUNE TROPHY** AT THE **2022 WORLD SUPERYACHT AWARDS**

BEST DISPLACEMENT MOTOR YACHT BETWEEN 1,000 - 1,499 GT



WINNER OF THE **2022 CAPTAIN MASTER 3000 GT CREW AWARD**

A CLASSIC OF THE FUTURE

M/Y TRIUMPH, one of the Benetti's latest, timeless masterpieces, is a 65.40 metre fully custom yacht with sleek and clean lines spanning over six decks. The steel displacement hull and the superstructure, made with aluminium, are painted in a classic white with aft in striking black. The external lines were penned by Giorgio M. Cassetta, complementing the naval architecture by Benetti. Green & Mingarelli Design contributed to the interiors, adding to the work done in-house by Benetti. The aggressive streamlined exteriors were designed by Giorgio M. Cassetta notably using large curved windows to balance the yacht's impressive presence.







WELCOME ON BOARD

TRIUMPH offers a host of luxurious amenities, including the ultimate lounging area located on the bow, sauna in the master suite, ice bath, fully equipped gym, massage room, jacuzzi and the beach club of the Lower Deck proposes an area of 70 square meters with a drop-down platform and immediate access to the sea.





LOUNGING AREA ON THE BOW



LOUNGING AREA ON THE BOW



LOUNGING AREA ON THE BOW



CROW'S NEST JACUZZI



BEACH CLUB



BEACH CLUB



BEACH CLUB



BEACH CLUB



BEACH CLUB



BEACH CLUB



SAUNA (MASTER SUITE) & ICE BATH

6 EXPANSIVE DECKS

The Sun Deck sits at the top the yacht on the sixth deck, not always present on yachts of this size. The crow's nest features an elegant jacuzzi, comfortable seating and a table for Six that can be used even while navigating, thanks to ample wind sheltering. The aft cockpit on the Main Deck is an outdoor spot, sheltered yet in contact with the environment, perfect for conversation and relaxation at any time of day. Amidships, the large and bright living area, consisting of a dining and relaxation space, is complete with every comfort.





MAIN AFT



MAIN AFT



MAIN AFT



UPPER AFT



UPPER AFT



UPPER AFT



UPPER AFT



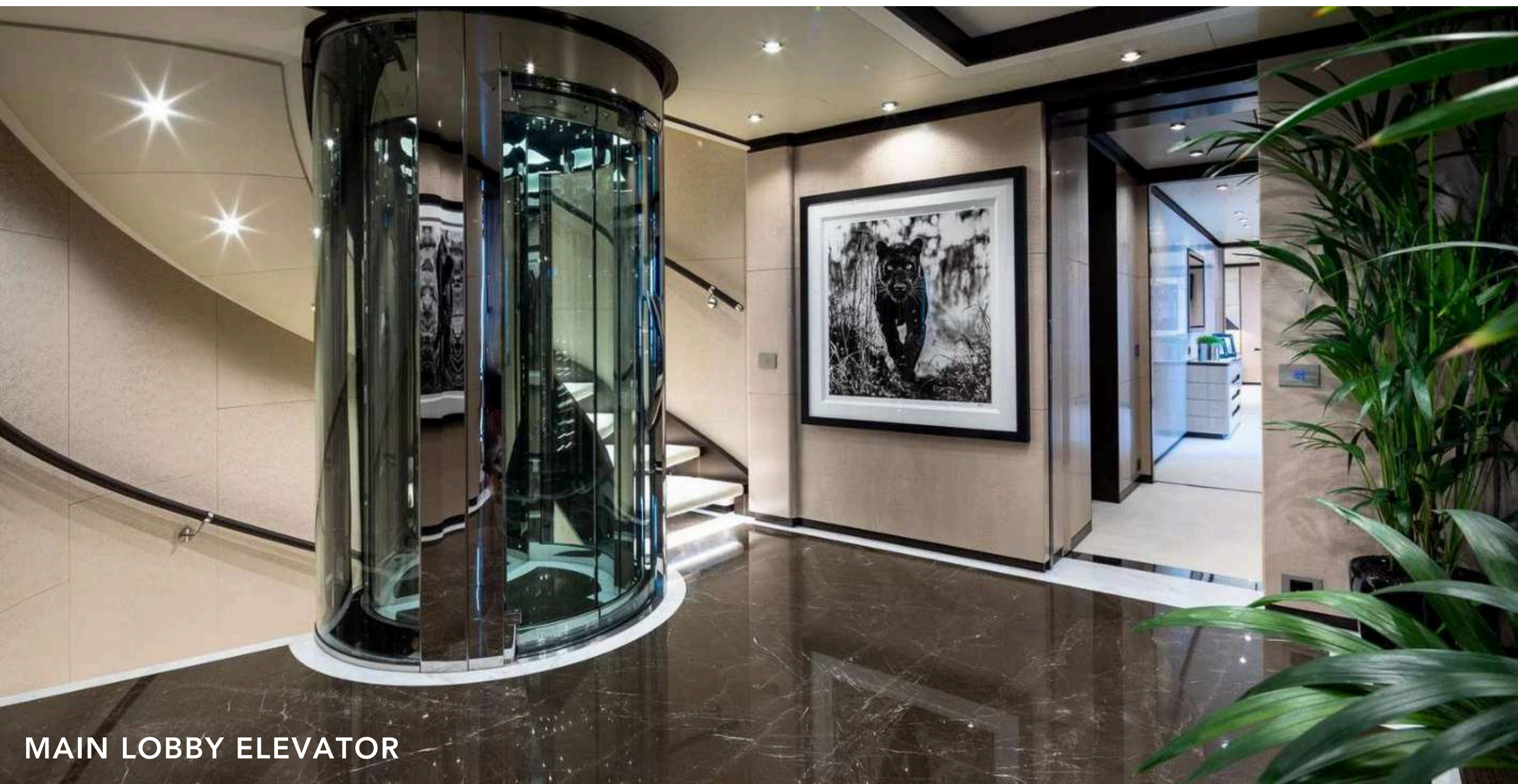
UPPER AFT



BRIDGE DECK FULLY EQUIPPED GYM

INTERIOR LIVING

Green & Mingarelli Design arranged the elegant interiors and many furnishing details, closely following the direction of the Benetti Interior Style Department. All the artwork on board is created by renowned British photographer David Yarrow. The sky lounge on the Upper Deck blends seamlessly with the welcoming aft outdoor spaces, outfitted with Indian Ocean custom furniture.



MAIN LOBBY ELEVATOR



MAIN LOUNGE



MAIN LOUNGE CINEMA



MAIN LOUNGE



MAIN LOUNGE



MAIN LOUNGE



MAIN DINING



MAIN DINING



UPPER SALON



UPPER SALON



UPPER SALON



UPPER DECK MASSAGE ROOM

ACCOMMODATION FOR 12 GUESTS

TRIUMPH accommodates 12 guests in 6 sumptuous staterooms. The owner's apartment, set over a sprawling 130 square meter area, takes full advantage of the deck's spaciousness and stunning views. Also on the Main Deck, a large VIP stateroom considered as the second master dedicates an opulent suite to the guests. The sleeping area amidships includes 2 double cabins and 2 twin cabins with pullmans for an additional 8 guests.





OWNER'S OFFICE



OWNER'S OFFICE



UPPER DECK MASTER



UPPER DECK MASTER



WALK-IN WARDROBE



WALK-IN WARDROBE



MASTER ENSUITE WITH SAUNA



MAIN DECK SECOND MASTER LOUNGE



MAIN DECK SECOND MASTER STATEROOM



MAIN DECK SECOND MASTER STATEROOM



MAIN DECK SECOND MASTER STATEROOM



MAIN DECK SECOND MASTER ENSUITE



LOWER DECK VIP STATEROOM



LOWER DECK VIP TWIN/CONVERTIBLE



VIP ENSUITE

POWER, RANGE & WATER TOYS

The engine room hosts a pair of MTU 12V 4000 M53 engines for a maximum speed of 16.5 knots and a cruising speed of 15 knots. TRIUMPH's range at 12 knots is an impressive 4,700 miles. TRIUMPH has a great array of water toys available to the guests, including 2 jet skis, 3 seabobs, custom inflatable jet ski/seabob station, towing inflatables, waterskis & wakeboards, snorkelling equipment and custom made MATE electric bicycles. A 2024 WallyPower 50, "TRIUMPH II" is available for the guests to use.









SWIMMING PLATFORM





WALLYPOWER 50



WALLYPOWER 50



SPECIFICATIONS

LOA:	65.40M / 214'7"
BEAM:	11.20M / 36'9"
DRAFT:	3.4M / 11'4"
BUILDER:	BENETTI
NAVAL ARCHITECT:	PIER LUIGI AUSONIO
BUILT YEAR:	2021
HULL CONSTRUCTION:	STEEL
SUPERSTRUCTURE:	ALUMINIUM
FLAG:	MALTESE
GRT:	1,244

GUESTS SLEEPING:	12 + 2 SUPERNUMERARIES
GUESTS CRUISING:	12
NUMBER OF CABINS:	6
CABIN CONFIGURATION:	- 2 MASTERS - 2 VIP - 2 CONVERTIBLE TWINS WITH PULLMAN BEDS
TOTAL CREW:	17

ENGINES:	X2 MTU 12V 4000 M53
CRUISING SPEED:	15 KNOTS
MAXIMUM SPEED:	16.5 KNOTS
RANGE:	4,700NM AT 12 KNOTS



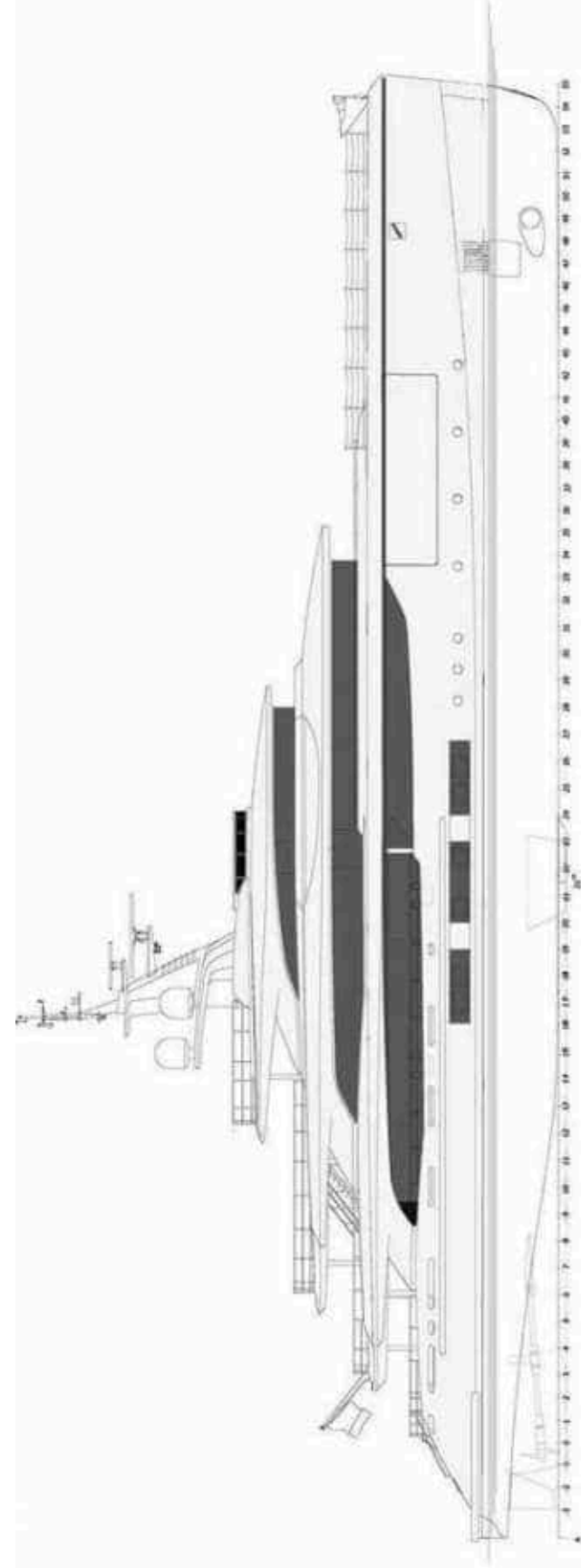
FEATURED HIGHLIGHTS

- 2024 WALLYPOWER 50 CHASE TENDER "TRIUMPH II"
- TWO MASTER STATEROOMS, THE FIRST WITH AN 180 DEGREE VIEW OVERLOOKING AN ENTIRELY PRIVATE SUNDECK AND THE SECOND WITH FULL BEAM ON THE MAIN DECK
- STRIKING INTERIORS DESIGNED BY GREEN & MINGARELLI, ARTWORK COURTESY OF DAVID YARROW, UNIQUE PIECES FROM THE OWNER'S PRIVATE TRIUMPH MOTORBIKE COLLECTION
- FULLY EQUIPPED GYM, SAUNA, MASSAGE ROOM & ICE BATH WITH DEDICATED BEAUTY AND MASSAGE THERAPIST ON BOARD
- BEACH CLUB AREA WITH DROP DOWN PLATFORM INCLUDING AN ADDITIONAL INFLATABLE CUSTOM JET SKI/SEABOB DOCKING STATION AND A VAST COLLECTION OF THE LATEST WATER TOYS
- STATE OF THE ART ELEVATOR SERVING FROM THE LOWER DECK TO THE BRIDGE DECK
- PROFESSIONAL & EXPERIENCED CHARTER CREW, BRINGING YOU AN UNFORGETTABLE CHARTER EXPERIENCE
- CINEMA PROJECTOR INCLUDING VIDEO CONFERENCE FEATURES

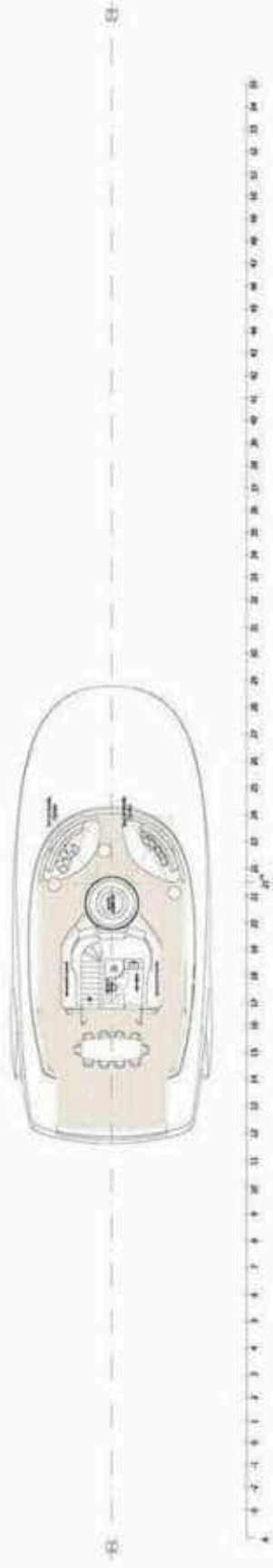




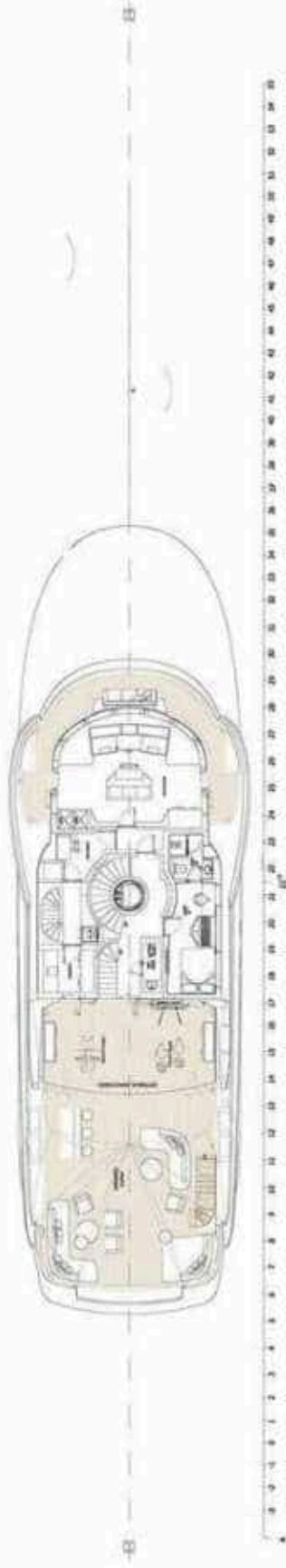




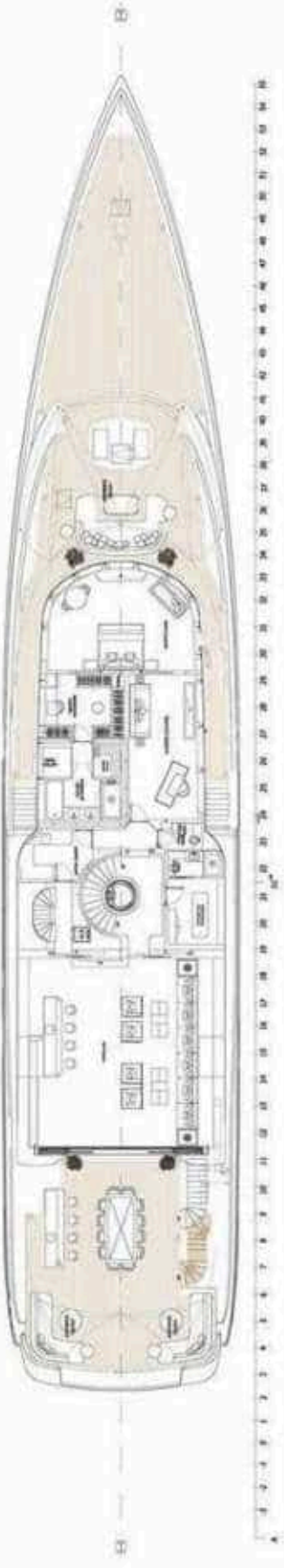
Profile



Sun deck



Bridge deck



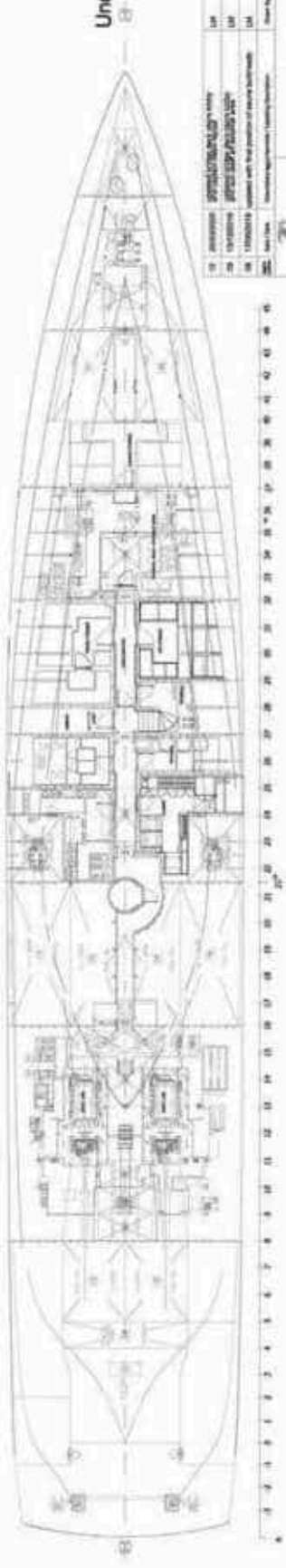
Upper deck



Main deck



Lower deck



Under-Lower deck

Item	Description	Quantity	Unit	Remarks
1	Steel plates	100	kg	
2	Steel pipes	50	kg	
3	Steel rods	20	kg	
4	Steel bolts	10	kg	
5	Steel nuts	10	kg	
6	Steel washers	10	kg	
7	Steel angles	10	kg	
8	Steel channels	10	kg	
9	Steel beams	10	kg	
10	Steel columns	10	kg	
11	Steel girders	10	kg	
12	Steel joists	10	kg	
13	Steel trusses	10	kg	
14	Steel bracing	10	kg	
15	Steel fasteners	10	kg	
16	Steel welds	10	kg	
17	Steel paint	10	kg	
18	Steel primer	10	kg	
19	Steel filler	10	kg	
20	Steel sand	10	kg	
21	Steel gravel	10	kg	
22	Steel concrete	10	kg	
23	Steel rebar	10	kg	
24	Steel mesh	10	kg	
25	Steel fabric	10	kg	
26	Steel rope	10	kg	
27	Steel cable	10	kg	
28	Steel wire	10	kg	



TRIUMPH